

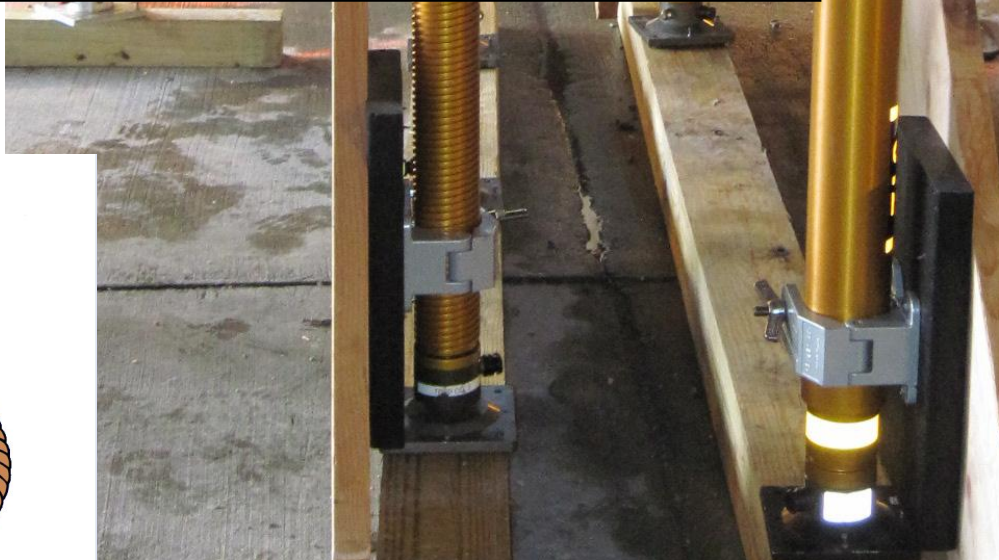


Toms River Technical Rescue Team

Operational Guidelines

2010

Updated 8-2011



ORGANIZATION

The Toms River Technical Rescue Taskforce became operational on August 1, 2005. The Technical Rescue Team is also referred to as the Tech Rescue Team or TR-TRT for short.

The scope and purpose of the technical rescue team is to have trained firefighters available to respond to technical rescue emergencies that are over and above the capabilities of the standard fire department response.

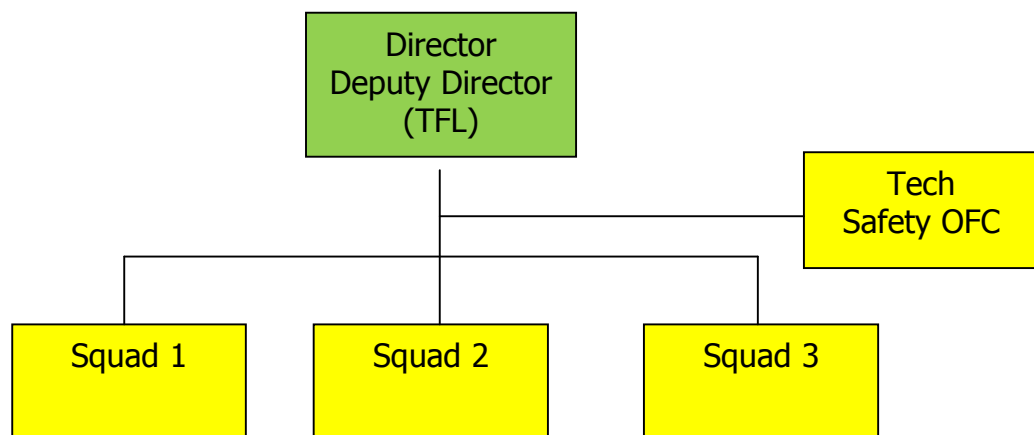
Technical rescue emergencies can be defined as structural collapse incidents and emergencies, trench rescue emergencies, confined space emergencies and high angle rope rescue emergencies and swift water incidents as defined by NFPA 1670 and 1006.

The technical rescue team is trained and equipped to be deployed to the above mentioned emergencies for the purpose of conducting search and rescue operations and to conduct rescue operations in the various technical rescue emergencies. The technical rescue team response is not limited to search and rescue operations. The team can be deployed to any situation where the team's intervention can result in the protection of property and provide for and create a safe environment for civilians.

The TR-TRT along with the Berkeley TRT and the Brick Twp. TRT has organized under the umbrella name of the "Ocean County Technical Rescue Taskforce" The OCTRT has been recognized by NJ-TF1 as the **R**egional **U**rban search and rescue **S**trike **T**eam for Ocean County under the NJ-TF1 (RUST) program.

ORGANIZATIONAL STRUCTURE

The technical rescue team is structured to operate as a Branch or a Division under a NIMs structured Incident Management System. The team organization consists of 2 branch directors, 2 deputy branch directors Who are also called Taskforce Leaders (TFL), 3 squad leaders and 3 squads with 10 Squad members and 1 Staffed Safety Officer.



DEPLOYMENT ORGANIZATION

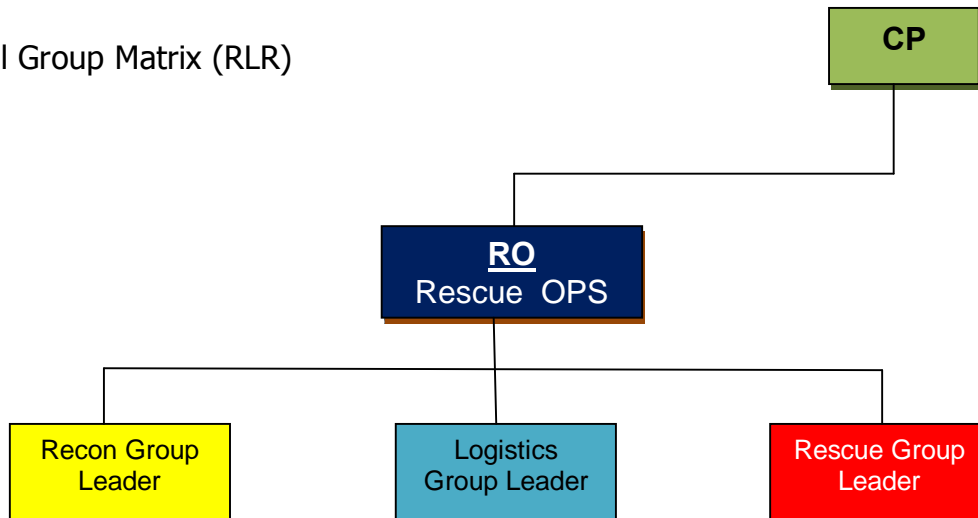
Upon activation of the TR-TRT; TRT members should respond to their respective fire stations and respond with pre-designated equipment. Team members may also respond directly to the scene if apparatus is already enroute. A (TFL) should respond directly to the scene. The TR-TRT has no intention of taking over a scene. The TRT will operate and integrate into the ICS organization and the local incident commander will remain in command. The following deployment model should be used:

First arriving (TFL) or Squad Leader shall report to the incident commander and operate as a liaison between the TRT and the IC.

Duties:

1. Establish contact with the IC.
2. Establish a staging area for incoming TRT units.
3. Determine if the County team needs to be dispatched. If yes then have the IC request the Brick and Berkeley teams be dispatched.
4. Start to devise an incident action plan (IAP).
5. Assign divisions, groups and safety officer as needed using the operational RRR matrix.
6. Assign accountability officer to check-in all TRT members using ICS-211 form.
7. Assign a TRT Rescue Operations Division (RO).

Operational Group Matrix (RLR)



Based on the nature of the emergency and the category of technical rescue presented; The TRT shall organize according to the RLR matrix and IAP.

SPECIFIC EMERGENCY RESPONSE GUIDLINES

Structural Collapse Incidents and emergencies:

TRT members shall organize using the following RLR Matrix:

Recon Group RECON GROUP LEADER	Logistics Group LOGISTICS GROUP LEADER	Rescue Group RESCUE GROUP LEADER
RECON GROUP: STRUCTURAL COLLAPSE OPERATIONS 3 FIREFIGHTERS <ol style="list-style-type: none">1. Tools: TIC, Search Cam, Air Monitor, Orange spray paint, Writing materials.2. Duties: Recon area for trapped victims, Mark areas with paint, create map sketch, monitor atmosphere. Report to RO3. Use multiple recon groups if needed.	LOGISTICS GROUP: STRUCTURAL COLLAPSE OPERATIONS 4-6+ FIREFIGHTERS <ol style="list-style-type: none">1. Operate cut station.2. Construct shores.3. Set up lighting4. Set up ventilation5. Provide runner between Rescue and cut station for measurements	RESCUE GROUP: STRUCTURAL COLLAPSE OPERATIONS 4-6+ FIREFIGHTERS <ol style="list-style-type: none">1. Conduct entry to access trapped victims.2. Determine types and size of shores3. Place shores to create safe areas and stabilize area.4. Conduct search for victims5. Use 2 rescue groups if needed.

Based on the severity of the incident the TFL should:

1. Have IC request Brick and Berkeley TRT Teams.
2. Have IC set up a secure perimeter around the scene and create one entry point.
3. Have first due fire company attempt to secure utilities.
4. Have IC request Utility companies respond.
5. Contact NJSP Regional Operation Center and request NJ-TF1 Incident Advanced Team (609) 882- 2000 ext 6900 Also request structural engineer and USAR K-9.
6. Have first due companies conduct surface victim removal and attempt to locate areas where victims may be trapped.

Mission capabilities: The TR-TRT scope of operations are from initial response out to approximately 2 to 3 hours depending on the complexity of the incident. The 2 to 3 hour window is the anticipated response time of the NJ-TF1. If the incident is a complex incident beyond the scope of the TR-TRT combined with the resources of the OCTRT, the teams will integrate into the NJ-TF1 organization for the remainder of the mission.

Trench Rescue Emergencies

TRT members shall organize using the following RLR Matrix:

Recon Group RECON GROUP LEADER	Logistics Group LOGISTICS GROUP LEADER	Rescue Group RESCUE GROUP LEADER
<p>RECON GROUP: TRENCH RESCUE OPERATIONS 3 FIREFIGHTERS</p> <ol style="list-style-type: none">1. Tools: Air Monitor, Orange spray paint, Writing materials.2. Duties: Recon area for trapped victims, Mark victim location with paint, create map sketch, monitor atmosphere. Report to RO3. Maintain air monitoring and assist with IAP4. Document scene.	<p>LOGISTICS GROUP: TRENCH RESCUE OPERATIONS 6-10 FIREFIGHTERS</p> <ol style="list-style-type: none">1. Move spoil pile2. Set ground pads3. Assemble Strut staging area4. Assemble and place Panels5. Operate cut station6. Assist with setting struts7. Set up ventilation8. Provide and set up any required equipment.	<p>RESCUE GROUP: TRENCH RESCUE OPERATIONS 4-6+ FIREFIGHTERS</p> <ol style="list-style-type: none">1. Set Struts from inside trench2. Remove dirt to access victim3. Package victim for removal4. Plan rigging requirements for victim removal5. Remove Equip from trench

Based on the severity, complexity and the availability of TRT personnel the TFL should:

1. Have IC request Brick and Berkeley TRT Teams.
2. Have IC set up a secure perimeter around the scene and create one entry point.
3. Remove all personnel from any unsupported trench.
4. Attempt to gather info on the last known location of the victim or victims.
5. Shut down any motorized equipment that may be running.
6. Have IC request a VAC Truck from the Township and the MUA for possible dirt removal and de-watering.
7. If available have initial personnel utilize construction material to construct ground pads and start to remove any spoil pile along the lip of the trench.
8. The TFL and IC need to make a determination if this is going to be a rescue of a recovery.
9. If incident deals with the removal of a live patient the TFL should determine if EMS personnel on location are familiar with "Crush Syndrome" procedures and treatment.
10. Strict attention to safety shall be maintained during the termination phase of the operation once the patient has been removed and equipment is being removed from the trench.

Confined Space Emergencies

TRT members shall organize using the following RLR Matrix:

Recon Group RECON GROUP LEADER	Logistics Group LOGISTICS GROUP LEADER	Rescue Group RESCUE GROUP LEADER
<p>RECON GROUP: CONFINED SPACE RESCUE OPERATIONS 3 FIREFIGHTERS</p> <ol style="list-style-type: none">1. TIC, Search Cam, SCBA, Air monitor.2. Recon space, conduct scene survey, take air samples, gather info to develop IAP. Report to RO3. Maintain air monitoring.4. Document entry log.	<p>LOGISTICS GROUP: CONFINED SPACE RESCUE OPERATIONS 4-6+ FIREFIGHTERS</p> <ol style="list-style-type: none">1. Set up air supply cart if needed.2. Set up ventilation3. Set up SABA air lines4. Set up Con-Space comm. System.5. Provide and set up any required equipment.6. Place all equipment back in service.	<p>RESCUE GROUP: CONFINED SPACE RESCUE OPERATIONS 4-6 FIREFIGHTERS</p> <ol style="list-style-type: none">1. Establish high point anchor if needed.2. Assemble main line and belay line rope equipment.3. Develop rigging entry and removal plan.4. Manage rigging for entry rescue group5. Establish entry and back up teams. Don harness and related equipment.6. Select SABA units if needed.7. Review entry IAP prior to entry.8. Enter space to extract victim.9. RGL monitor comm. For entry.

Based on the severity, complexity and the availability of TRT personnel the TFL should:

1. Have IC request Brick and Berkeley TRT Teams.
2. Have IC set up a secure perimeter around the scene and create one entry point.
3. Attempt to gather info on the last known location of the victim or victims.
4. Start air monitoring if equipment is available.
5. Start ventilation of the space if equipment is available.
6. At some point the TFL and the IC need to make a determination if this is going to be a rescue or a recovery operation.
7. TFL may need to request a hazmat team if decontamination of patient and rescuers are required.
8. Strict attention to safety shall be maintained during the termination phase of the operation once the patient has been removed and equipment is being removed from the space.

High Angle Rescue Emergencies

TRT members shall organize using the following RLR Matrix:

Recon Group RECON GROUP LEADER	Logistics Group LOGISTICS GROUP LEADER	Rescue Group RESCUE GROUP LEADER
RECON GROUP: HIGH ANGLE RESCUE OPERATIONS 3 FIREFIGHTERS 1. Conduct recon of scene to develop IAP and conduct scene survey.	LOGISTICS GROUP: HIGH ANGLE RESCUE OPERATIONS 2-4+ FIREFIGHTERS 1. Assemble Main line and Belay rope equipment. 2. Assemble needed victim removal equip: stokes, LSP, victim harness etc. 3. Recover equipment and place back in service.	RESCUE GROUP: HIGH ANGLE RESCUE OPERATIONS 6-8 FIREFIGHTERS 1. Establish entry and back up team. Don harness & related equipment. 2. Review rescue IAP. 3. Establish required anchor and rigging for IAP. 4. Provide Belay operation, Provide main line raising and lowering operation as needed. 5. Conduct rescue. 6. Recover equipment.

1. Have IC set up a secure perimeter around the scene and create one entry point.
2. Remove or restrict anyone from attempting rescue who are not properly trained or equipped.
3. Request JCP&L if area is near electric lines.
4. If operation is "Ground Up" then TFL shall ensure that fall protection is maintained at all times. Lead climber shall set safety line for fall protection for balance of rescue group. All rescue group personnel shall maintain an attached point of contact if working near an edge.
5. If operation is "Top Down" all personnel working near an edge shall utilize a tie off system to prevent a fall.

INCIDENT TERMINATIONS

1. All technical rescue operations shall be demobilized in an orderly manner with the focus on safety.
2. The TFL should create a demobilization plan as part of the IAP with the approval of the IC.
3. Following the completion of the incident, a critique should be conducted ASAP.

ORGANIZATIONAL APPLICATION REQUIREMENTS AND PROCESS

Members of the Toms River Township fire companies may make application to become team members by submitting an application. If an opening in the team roster needs to be filled the team leadership will review applications to determine if the applicant meets the requirements and training needed to become a member. The team leaders may request that applicants conduct a rescue skills assessment test in order for the team leadership to best select the most qualified individual. The taskforce leaders reserve the exclusive right to select or reject any applicant based on the subjective observations of the applicant's qualifications, skills abilities and attitude.

An applicant should have a minimum of (5) years in the fire department prior to making application. Applicants with prior technical rescue experience, training and certifications will be deemed to have preference over non trained or certified applicants.

An assessment test may consist of applicants performing the following hands on activities to show a level of proficiency with rescue tools, equipment and procedures:

1. Show proficiency in tying basic rescue knots used in rope rescue.
2. Construct a mechanical advantage system.
3. Demonstrate the use of a 950 saw (K12).
4. Demonstrate the use of a 7 ¼" circular saw.
5. Demonstrate the use of building box cribbing while raising an object using air bags.

ORGANIZATIONAL TRAINING REQUIREMENTS

The Toms River TRT will make every attempt to conduct at minimum one training drill per month. The taskforce leaders have determined that each member needs to maintain a fifty-percent (50%) attendance of these drills in order to maintain an active status on the team. The TFLs will review member training attendance from time to time. If a member is found to be lacking in training attendance the TFLs may put the member on notice that their participation is below par and future lack of attendance could result in removal from the team.

The Toms River TRT will make every attempt to provide structured training in accordance with mission specific duties and to provide third party certification training. Training courses are all contingent on budget constraints.

RUST Participation:

The Toms River TRT along with Berkeley and Brick TRT's make up the Ocean County Technical Rescue Taskforce. This organization is currently part of the NJ-TF1 RUST program. RUST is an acronym for Regional USAR Strike Team. The concept is to have Counties in NJ who are not part of the UASI region (Urban Area Security Initiative) and their metro strike teams have the capability to respond throughout NJ and aid NJ-TF1 whenever requested. A deployable strike team will consist of six trained TRT members

In order to be deployable as a RUST team member, TRT members need to be certified to the following levels:

Structural collapse 1	40 hours
Structural collapse 2	40 hours
Trench 1	5 days for 1&2
Trench 2	
Confined space/ Ropes& rigging	32 Hours

Currently the training above is conducted through NJ-TF1 and only NJ-TF1 certificates will be accepted. This training is currently being made available at no cost by NJ-TF1.

Members who have started their training and who have completed structural collapse 1 may be issued USAR turnout gear that displays the NJ-RUST acronym. This is all contingent of budgeting issues.

The Toms River TRT will strive to have each member qualified to the RUST requirements.

NJ-RUST DEPLOYMENT ORGANIZATION

Currently under development.

TR-TRT EQUIPMENT

Currently the equipment issued to a TRT member is as follows:

Long sleeve BDU blouse with patches and trousers.
Kiwi helmet (Black)
Petzl helmet light
Rope gloves
Jump suit
Boots*
Carry bag
Equipment Currently used but not initially issued:

M65 field jacket (self purchase)
Ringers extrication gloves
Eye protection
Ear protection
Knee pads
Elbow pads

*Currently an inexpensive pair of zip up boots is part of the equipment issue. We want to provide everyone with a standardized pair of HAIX Firefighter Extreme USAR boots, however, due to budget constraints this matter is still evolving.

A list of personal equipment along with ancillary equipment can be found posted at www.tomsriverfire.com under the TRT section.

USAR turnout gear is currently being issued to members who have completed the SCO-1 course and who are presumed to complete the other required training for RUST certification.